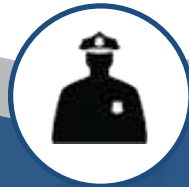


WORK AREA - DEFLEX 48 48" RETRACTABLE BELT DELINEATOR

Crowd channelizing is critical to holding successful public events and our DEFLEX crowd control delineator is the perfect tool to create passages and limit areas. With a height of 1200 mm (48"), variable installation options and quick installation, the Deflex delineator is the ideal tool to achieve efficient crowd control.



MANAGE WAITING
LINES



SITES REMAINS ACCESSIBLE
FOR EMERGENCY VEHICLES



EFFICIENT VISUAL
MARKER

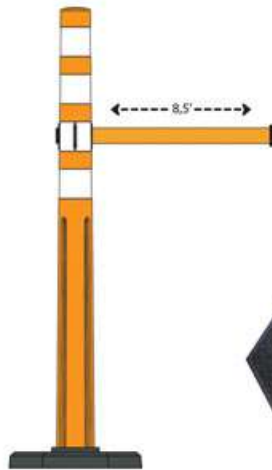
DEFLEX

FLEXIBLE DELINEATOR





FEATURES OF THE DEFLEX 48" RETRACTABLE BELT DELINEATOR



OPTION
stab 36217

Stabilizer installation for temporary and mobile use.



OPTION
adapter BS114

OPTION
carvel sleeve anchor
MC20

Carvelle anchor installation easy in easy out.



RUBBER STABILIZER
7.25KG / 16LB #36217



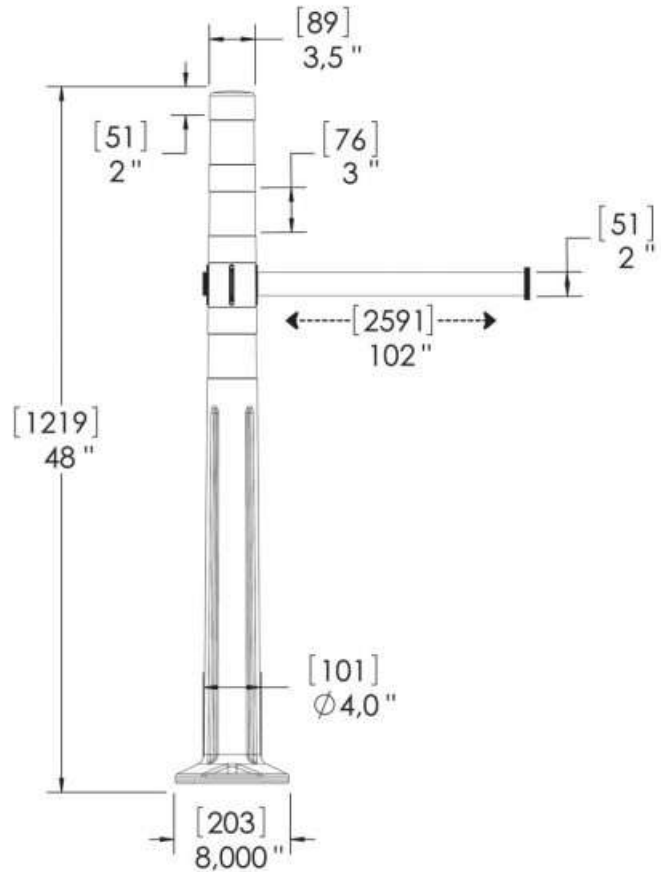
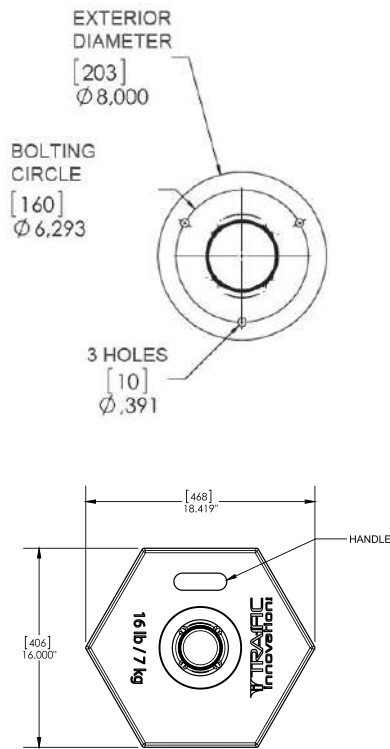
SLEEVE ANCHOR
ADAPTER #BS114



TECHNICAL SPECIFICATIONS OF THE DEFLEX 48" RETRACTABLE BELT DELINEATOR

Materials

Delineator	Flexible Polymer with anti-UV
Sheeting	Diamond grade "prismatic", type IV
Belt	Nylon



Product Number	Description	Box : Dimenson - Weight	HSS Code
Assembly Kit			
#36180	Orange Flexible delineator with four (4) White Diamond Grade Reflective Bands and Orange belt	Pallet 100 units : 44 x 50 x 80 in – 450 lbs	3926.90
#36348	Black Flexible delineator with four (4) Yellow Diamond Grade Reflective Bands and Yellow belt	Pallet 100 units : 44 x 50 x 80 in – 450 lbs	3926.90
Options			
#36217	Hexagonal rubber base 7.25 kg (16 lbs)	Pallet 50 units : 42 x 46 x 26 in – 1100 lbs	4017.00
#33069	BS-114, Sleeve Anchor Adapter	Box 50 units : 42 x 46 x 16 in – 225 lbs	N/A

Included with kit : Two (2) year Limited Warranty against defects in workmanship and materials.