

**SLOW STOP
BOLLARD**



By **IMPACT** recovery
SYSTEMS™



REBOUNDED BOLLARD SYSTEM



SharpLine Solutions, Inc.

www.sharpline-solutions.com | (626) 257-8328

SLOWSTOP CATALOG



Local Phone
(210) 736-4477



Office Location
4955 Stout Dr.
San Antonio, TX 78219



Toll-Free Phone
(800) 736-5256

CONTACT
IMPACT recovery
S Y S T E M S™

Thank you for taking time to review our product line. If you have any questions or comments, please feel free to contact us.



Website
www.SlowStop.com



Fax
(210) 734-6448



eMail Address
info@impactRecovery.com

©2015 Impact Recovery Systems, All Rights Reserved

SlowStop® Bollard has been extensively tested by TÜV Rheinland TNO and is proven through a large installation base.
ISO 9001:2008 Certified. Patents pending.
Catalog Version 1.0 July 2015

COMPANY HISTORY



IMPACT RECOVERY SYSTEMS

25 YEARS OF EXCELLENCE

Impact Recovery Systems, Inc. has been in business for over 25 years. We manufacture flexible, high-impact traffic and safety devices for roads, pedestrians, warehouses and facilities. Our products are sold and used world-wide and have prominent applications in the United States, Canada, France, Japan, England, Belgium, Taiwan, The Netherlands, Turkey, Brazil and more. We have won multiple awards for manufacturer and product innovation and we continually work to bring our customers the high quality and lasting durability they expect from our products. Our new SlowStop® Product line does not disappoint.

IMPACT recovery
SYSTEMS™

4955 Stout Dr. San Antonio, Tx 78219 | T: 800.736.5256 | www.ImpactRecovery.com | www.SlowStop.com



**BUILT TO
LAST**





By **IMPACT recovery**
SYSTEMS™

01. About SlowStop® 01



SlowStop® History	03
How SlowStop® Works	03
SlowStop® Benefits	04
SlowStop® Clients	04

02. Rebounding Bollards 05



Standard Rebounding Bollard Kits	07
Handicap Parking Bollard Kit	10

03. Guardrail Solutions 11



Custom Guarding (U-shaped)	13
Pipe -Per- Foot	14
SlowStop Connectors	15
Flexible Polycarbonate Guardrail	18

04. Parts and Accessories 19



SlowStop® Bollard Covers	21
Replacement Pipe	22
Base Kits	23

SlowStop® Warranty 25



SlowStop Warranty	25
Product Index	26





ABOUT SLOWSTOP®

A revolutionary new rebounding bollard system

A revolutionary new rebounding bollard system that absorbs energy, reducing damage to vehicles and assets, while protecting personnel.

- **SlowStop® History**
- **How SlowStop® Works**
- **SlowStop® Benefits**

ABOUT SLOWSTOP

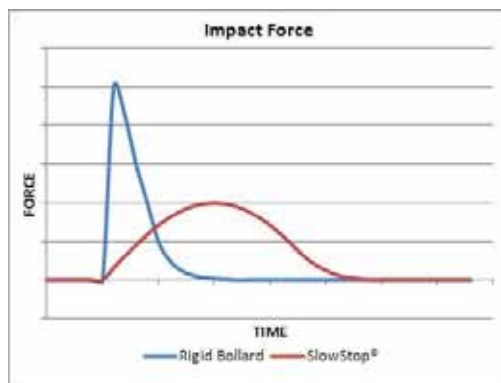
The patented SlowStop® Bollard system is a revolutionary new rebounding steel pipe bollard that does more than just block access. Its ability to absorb energy from the impact helps to reduce damage to vehicles, assets, and personnel involved in the collision.

SlowStop® History

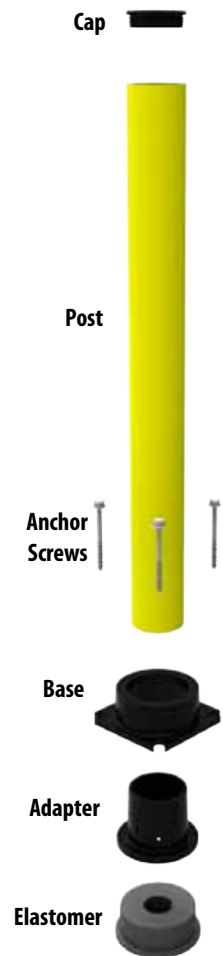
The SlowStop® Bollard was invented in 2010 in Belgium by the same inventors as the Hercules Bollard. Hercules was a successful product that also allowed a bollard to tilt when impacted, but was complicated and expensive. Known in Europe as SoftStop®, the SlowStop® Bollard has been extensively tested by the testing firm TÜV Rheinland TNO and is proven through a large installation base. With worldwide patents and patents pending, the SoftStop® Bollard is now available in the United States and Canada as SlowStop® exclusively through Impact Recovery Systems.

How Does SlowStop® Work?

During a collision, the kinetic energy of the impact is absorbed by an elastomer hidden in the base of the bollard. The post is able to tilt approximately 20° as it progressively absorbs energy, softening the impact. After the impact, the post returns upright, leaving your guard intact and ready to perform again.



SlowStop® is designed as a frangible, easily maintained, modular system that prevents damage to concrete and structural floors. The system is made up of four main components: The post (standard schedule 40 pipe), base, adapter, and the energy absorbing elastomer. Each piece is modular and easily replaced should damage occur. The system is installed using four to eight concrete anchor screws to secure the unit to concrete.





By **IMPACT recovery**
SYSTEMS™



SlowStop® Benefits

The benefits of the SlowStop® Bollard System are numerous. Among them are the following:

- **2 Year Product Warranty**
Our SlowStop product line is backed by a two year warranty. See warranty details.
- **Increased Personnel Safety**
Vehicle occupants are less likely to be injured as peak impact forces are lessened.
- **Reduced Damage**
Damage is reduced to both the vehicle and the bollard during impact when compared to a rigid bollard.
- **Reduced Asset Loss**
Forklift loads are less likely to be lost during an accidental collision.
- **Installation is Simple**
Installation of our standard bollards require only common tools and take about 15 minutes each to install.
 - **No core drilling**
 - **No backfilling**
 - **No special tools**
 - **No Painting**
 - **No Welding**
 - **No Aisle Closures**
- **Instantly Operational**
There are no waiting periods, such as concrete curing or paint drying, before our bollards are ready to use. Once installation is complete, the bollard is fully operational.
- **Modular System**
Our modular system allows for the replacement of damaged parts without excavating and repairing concrete.
- **Flexible Relocation**
Relocation of our SlowStop® bollards is quick and simple. Simply remove the anchor screws from the concrete and install the bollard in a new location. No large core holes to repair and no chipping away old concrete.
- **Custom Fencing and Barriers**
Fencing and complex barriers can be created to your exact size requirements, from slide-together connectors, without the need for welding.

Respectable Clientele

SlowStop® Bollards are in use world-wide by companies both small and large. Some of our highly-respected clients include the following: Amazon, Coca-Cola, Bed, Bath & Beyond, Chevron Co., General Motors Corp., Toyota Motor Co., Us Postal Service, H-E-B, Wal-Mart, San Antonio International Airport, Las Vegas Convention Center, Specialty's Kitchen, Clearwater Paper Corp., Georgia Pacific, Stanford Medical Center, and University of Pittsburgh Medical Center.



.02

REBOUNDED BOLLARDS

The future of the bollard has arrived

Our revolutionary new impactable steel pipe bollards do more than just block access. During a collision, the energy of the impact is progressively absorbed by an elastomer in the base of the bollard. The post tilts slightly with impact and then returns upright, leaving your guard intact and ready to perform again. End your headache of constantly repairing and replacing bollards. Switch to SlowStop® today.

- **Standard Rebounding Bollard Kits**
- **Handicap Parking Bollard Kit**

REBOUNDING BOLLARD



REBOUNDING BOLLARD

Our SlowStop® Rebounding Bollards are successfully used in commercial locations, industrial environments, logistical sites, and for traffic control situations. Their strength rivals that of traditional bollards with lower costs and less hassle. Our bollards are surface mounted in approximately 15 minutes and are immediately ready for use once installed. Each kit comes with everything you need to install a single rebounding bollard.

3" Rebounding Bollard Kit (42" height)

Part No. SS3Y-42



Ideal for light applications such as electric carts and pallet jacks. Also great for residential uses. Hardware and anchors included.

Color:	RAL 1018 Yellow Bollard on Black Base
Diameter:	2.88" (2.5" ANSI Schedule 40)
Product Weight	37 lbs
Energy Absorption:	1,621 joules /1,195 ft-lb
Temperature Rating:	-40°
Pipe Coating:	150µm Polyester Outdoor Power Coat
Cast Iron Coating:	Environmentally Friendly Water-Based KTL Coating
Set Screws:	(5) M12 x 1.75 , 6mm Hex
Anchor Screws:	(4) 5/8" x 5-1/2" Concrete Anchor Screws
Cap:	Black Plastic



IMPACT recovery SYSTEMS

www.SlowStop.com



By **IMPACT recovery**
SYSTEMS™

4" Rebounding Bollard Kit (42" height)

Part No. SS4Y-42

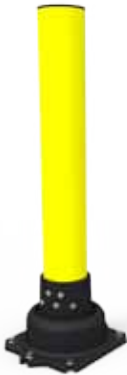


Ideal for medium applications such as low speed cars, light trucks and slow moving, 5000 lb fork lifts. Hardware and anchors included.

Color:	RAL 1018 Yellow Bollard on Black Base
Diameter:	4.00" (3.5 ANSI Schedule 40)
Product Weight	62 lbs
Energy Absorption:	2,667 joules / 1,967 ft-lb
Temperature Rating:	-40°
Pipe Coating:	150µm Polyester Outdoor Power Coat
Cast Iron Coating:	Environmentally Friendly Water-Based KTL Coating
Set Screws:	(5) M16 x 2.00, 8mm Hex
Anchor Screws:	(4) 5/8" x 5-1/2" Concrete Anchor Screws
Cap:	Black Plastic

5" Rebounding Bollard Kit (42" height)

Part No. SS5Y-42



Ideal for heavier applications such as cars, large trucks and typical fork lifts. Hardware and anchors included.

Color:	RAL 1018 Yellow Bollard on Black Base
Diameter:	5.56" (5" ANSI Schedule 40)
Product Weight	110 lbs
Energy Absorption:	7,000joules / 5,163 ft-lb
Temperature Rating:	-40°
Pipe Coating:	150µm Polyester Outdoor Power Coat
Cast Iron Coating:	Environmentally Friendly Water-Based KTL Coating
Set Screws:	(6) M16 x 2.00, 8mm Hex
Anchor Screws:	(6) 5/8" x 5-1/2" Concrete Anchor Screws
Cap:	Black Plastic

6" Rebounding Bollard Kit (42" height)

Part No. SS6Y-42



Ideal for heavy applications such as delivery trucks, heavy fork lifts, and even semi-trucks. Great for loading docks and entrance ramps. Hardware and anchors included.

Color:	RAL 1018 Yellow Bollard on Black Base
Diameter:	6.63" (6" ANSI Schedule 40)
Product Weight	161 lbs
Energy Absorption:	12,934 joules / 9,536 ft-lb
Temperature Rating:	-40°
Pipe Coating:	150µm Polyester Outdoor Power Coat
Cast Iron Coating:	Environmentally Friendly Water-Based KTL Coating
Set Screws:	(8) M16 x 2.00, 8mm Hex
Anchor Screws:	(8) 5/8" x 5-1/2" Concrete Anchor Screws
Cap:	Black Plastic

HANDICAP BOLLARD





By **IMPACT recovery**
SYSTEMS™

HANDICAP PARKING BOLLARD

Create a resilient handicap parking bollard that is strong enough to eliminate the need for concrete wheel stops. Merely Install on a concrete pad or platform, provide the foam or concrete to pour inside the steel bollard and forget about damaged sign posts and vehicles.

Recommended Uses: Parking lot handicap parking spots, post-tensioned concrete, parking garage, reserved parking, parking lot stop signs.

* Sign face can be changed for alternate uses.

** Double-Sided sign option available

Handicap Parking Bollard (4")

Part No. SS4Y-42-HC



This 4" Bollard kit comes complete with a rebounding metal bollard and signpost, HDPE R7-8 Reserved Parking sign, brackets, and anchors.

Color:	RAL 1018 Yellow Bollard on Black Base
Diameter:	4" (3.5" ANSI Schedule 40)
Bollard Height:	42"
Sign Height:	60" Above Ground (ADA) to bottom (78" Overall)
Fill:	Concrete or foam fill by customer
Product Weight	68 lbs
Energy Absorption:	2,667 joules / 1,967 ft-lb
Temperature Rating:	-40°
Pipe Coating:	150µm Polyester Outdoor Power Coat
Cast Iron Coating:	Environmentally Friendly Water-Based KTL Coating
Reflective Sheeting:	Engineer Grade Reflective Sheeting on HDPE Substrate
Post Material:	Aluminum Post, white
Set Screws:	(5) M16 x 2.00, 8mm Hex
Anchor Screws:	(4) 5/8" x 5-1/2" Concrete Anchor Screws
Cap:	Black Plastic



.03

GUARDING SOLUTIONS

Modular and expandable fencing

Our SlowStop® bollards are modular and expandable to meet all your protection needs. With our cast-iron SlowStop® elbow, tee, and cross-shaped tubular joints, you can easily configure custom, U-shaped brackets, safety railings, protection buffers, fences and guardrail systems. Our Flexible Polycarbonate Guardrail mounts to our SlowStop® bollards to create virtually unbreakable barriers.

- **Custom Guarding**
- **SlowStop Connectors**
- **Pipe - Per - Foot**
- **Flexible Polycarbonate Guardrail**

CUSTOM GUARDING



HORSESHOE BOLLARD

Our SlowStop® Horseshoe Bollards have twice the stopping power of our single rebounding bollards. They consist of two rebounding bollard bases with steel pipe and connectors to create a horseshoe bollard. This is ideally suited to protect confined areas.

3" Rebounding Horseshoe Bollard Kit (36"H x 36"W)

Part No. SS3Y-36-HS-36



Recommended Uses: Column protection, pedestrian protection, rack and equipment guarding, access denial, post-tensioned concrete.

Color:	RAL 1018 Yellow Bollard on Black Base
Diameter:	3" (2.5" ANSI Schedule 40)
Dimensions:	36" Height x 36" Width
Product Weight	97 lbs
Energy Absorption:	3,240 joules / 2,390 ft-lb
Temperature Rating:	-40°
Pipe Coating:	150µm Polyester Outdoor Power Coat
Cast Iron Coating:	Environmentally Friendly Water-Based KTL Coating
Set Screws:	M12 x 2.00mm Hex
Anchor Screws:	(8) 5/8" x 5-1/2" Concrete Anchor Screws



www.SlowStop.com



By **IMPACT recovery**
SYSTEMS™

Modular Fencing (horseshoe bollards)

GUARDING SOLUTIONS

4" Rebounding Horseshoe Bollard Kit (28" H x 36"W)

Part No. SS4Y-28-HS-36



Recommended Uses: Fuel pump protection, equipment & storage rack guarding, drive-thru lanes, utility protection, access denial, post-tensioned concrete.

Color:	RAL 1018 Yellow Bollard on Black Base
Diameter:	4" (3.5" ANSI Schedule 40)
Dimensions:	28" Height x 36" Width
Product Weight	154 lbs
Energy Absorption:	5,334 joules / 3,934 ft-lb
Temperature Rating:	-40°
Pipe Coating:	150µm Polyester Outdoor Power Coat
Cast Iron Coating:	Environmentally Friendly Water-Based KTL Coating
Set Screws:	M16 x 2.00mm Hex
Anchor Screws:	(8) 5/8" x 5-1/2" Concrete Anchor Screws

4" Rebounding Horseshoe Bollard Kit (42" H x 36"W)

Part No. SS4Y-42-HS-36



Recommended Uses: Gas pump protection, equipment & storage rack guarding, drive-thru lanes, utility protection, access denial, post-tensioned concrete.

Color:	RAL 1018 Yellow Bollard on Black Base
Diameter:	4" (3.5" ANSI Schedule 40)
Dimensions:	42" Height x 36" Width
Product Weight	165 lbs
Energy Absorption:	5,334 joules / 3,934 ft-lb
Temperature Rating:	-40°
Pipe Coating:	150µm Polyester Outdoor Power Coat
Cast Iron Coating:	Environmentally Friendly Water-Based KTL Coating
Set Screws:	M16 x 2.00mm Hex
Anchor Screws:	(8) 5/8" x 5-1/2" Concrete Anchor Screws

Custom Modular Fencing Solutions

Pipe-Per -Foot Available



Do you need a custom shape or size? With our SlowStop® Connectors, the possibilities are nearly endless. Contact us today for a quote on custom arrangements.

3" Pipe-Per-Foot	Part # SS3Y-PIPE-XX
4" Pipe-Per-Foot	Part # SS4Y-PIPE-XX
5" Pipe-Per-Foot	Part # SS5Y-PIPE-XX
6" Pipe-Per-Foot	Part # SS6Y-PIPE-XX
Toll-Free Phone:	800.736.5256
Website:	www.SlowStop.com

SLOWSTOP CONNECTORS

The SlowStop® connector system allows you to build fencing and cross posts without the need for welding pipe. Simply slide the pipe into the connector and tighten the special set-screws. Multiple bases connected together greatly increase the stopping power of the SlowStop® System.

3" Elbow Connector

Part No. SS3-ELBOW



Elbow connector for 3" SlowStop® pipe. Our Elbow Joint is made of the same tough nodular cast iron as our SlowStop® bases. Hardware Included.

Color:	Black
Diameter:	3" (2.5" ANSI Schedule 40)
Dimensions:	Height: 7.0" x Width: 7.0"
Product Weight	12 lbs
Temperature Rating:	-40°
Material:	Cast Iron
Set Screw:	(12) M12 x 2.00mm Hex

3" Tee Connector

Part No. SS3-TEE



Tee connector for 3" SlowStop® pipe. Our Tee Joint is made of the same tough nodular cast iron as our SlowStop® bases. Hardware Included.

Color:	Black
Diameter:	3" (2.5" ANSI Schedule 40)
Dimensions:	Height: 6.3" x Width: 7.8"
Product Weight	12 lbs
Temperature Rating:	-40°
Material:	Cast Iron
Set Screw:	(18) M12 x 2.00mm Hex

3" Cross Connector

Part No. SS3-CROSS



Cross connector for 3" SlowStop® pipe. Our Cross Joint is made of the same tough nodular cast iron as our SlowStop® bases. Hardware Included.

Color:	Black
Diameter:	3" (2.5" ANSI Schedule 40)
Dimensions:	Height: 9.1" x Width: 7.9"
Product Weight	15 lbs
Temperature Rating:	-40°
Material:	Cast Iron
Set Screw:	(24) M12 x 2.00mm Hex





4" Elbow Connector

Part No. **SS4-ELBOW**



Elbow connector for 4" SlowStop® pipe. Our Elbow Joint is made of the same tough nodular cast iron as our SlowStop® bases. Hardware Included.

Color:	Black
Diameter:	4" (3.5" ANSI Schedule 40)
Dimensions:	Height: 9.6" x Width: 9.6"
Product Weight	21 lbs
Temperature Rating:	- 40°
Material:	Cast Iron
Set Screw:	(12) 5 M16 x 2.00mm Hex

4" Tee Connector

Part No. **SS4-TEE**



Tee connector for 4" SlowStop® pipe. Our Tee Joint is made of the same tough nodular cast iron as our SlowStop® bases. Hardware Included.

Color:	Black
Diameter:	4" (3.5" ANSI Schedule 40)
Dimensions:	Height: 9.1" x Width: 10.13"
Product Weight	22 lbs
Temperature Rating:	- 40°
Material:	Cast Iron
Set Screw:	(18) 5 M16 x 2.00mm Hex

4" Cross Connector

Part No. **SS4-CROSS**



Cross connector for 4" SlowStop® pipe. Our Cross Joint is made of the same tough nodular cast iron as our SlowStop® bases. Hardware Included.

Color:	Black
Diameter:	4" (3.5" ANSI Schedule 40)
Dimensions:	Height: 13.25" x Width: 10.13"
Product Weight	29 lbs
Temperature Rating:	- 40°
Material:	Cast Iron
Set Screw:	(24) 5 M16 x 2.00mm Hex

FLEXIBLE POLYCARBONATE GUARDRAIL





By **IMPACT recovery**
SYSTEMS™

FLEXIBLE POLYCARBONATE GUARDRAIL

Our SlowStop® Polycarbonate Guardrail attaches to our SlowStop® Bollards to create virtually unbreakable barriers. The flexible material can withstand an incredible 12,500 pounds of force without permanent deflection. It returns to its original shape again and again, impact after impact.

Its lightweight nature makes it easy to install. It can even be used to form curved barriers without bending machines. Each piece is Injection Molded and colored yellow throughout. This safety rail eliminates maintenance painting and resists undesirable warping and denting. The rails are recessed to allow for overlapping of multiple lengths.

Our guardrails come complete with hardware for attaching to our SlowStop® Bollards.

SlowStop® Polycarbonate Guardrail - 4m

Part No. SSRY-4



Flexible Polycarbonate Guardrail mounts to SlowStop® bollards to create virtually unbreakable barriers. Each section of rail covers 4m (2m cuts available). Hardware included.

Color:	RAI 1023 Safety Yellow (custom colors available)
Material:	Flexible Polycarbonate
Dimensions (metric):	4,340mm (4m) Length x 350mm Height
Dimensions (US):	14'13" Length x 14" Height
Product Weight	40 lbs
Energy Absorption:	12,500 lbs without permanent deflection
Temperature Rating:	-135° F
Mold:	One piece - Injection Molded
Flexible:	No bending equipment required for curves

SlowStop® Polycarbonate Guardrail End Cap

Part No. SSEY



Flexible Polycarbonate Guardrail End Cap attaches to the standard 4m SlowStop® Polycarbonate Guardrail. Hardware included.

Color:	RAI 1023 Safety Yellow (custom colors available)
Material:	Flexible Polycarbonate
Dimensions (metric):	600mm Length x 350mm Height (250mm overlapping)
Dimensions (US):	24" Length x 14" Height
Product Weight	6.5 lbs
Energy Absorption:	12,500 lbs without permanent deflection
Temperature Rating:	-135° F
Mold:	One piece - Injection Molded
Flexible:	No bending equipment required for curves



.04

PARTS AND ACCESSORIES

Replacement parts and accessories

Whether you want to change your configuration or order replacement parts for your existing SlowStop® Bollards, you can find it all here.

- **SlowStop® Bollard Covers**
- **Replacement Pipe**
- **Base Kits**

PARTS AND ACCESSORIES

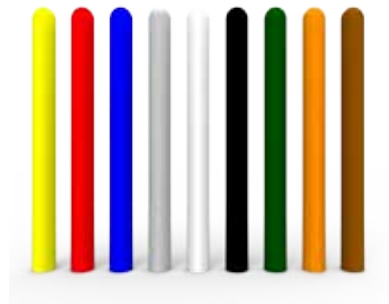


BOLLARD COVER

Add one of these maintenance-free bollard covers to our standard Rebounding Bollard Kits to increase the height or change colors. Covers are pre-fitted to fit over our rebounding steel pipe bollard and they install in just minutes. Never paint a bollard again!

4" Plastic Bollard Cover

Part No. SS4C-COVER



Standard covers are 54" tall creating a 60" tall bollard when installed on a SlowStop® 4" bollard kit. Covers can be cut for shorter heights.

Color Option:	Yellow, Red, Blue, Gray, White, Black, Green, Orange or Brown
Diameter:	4 - 5/8" (4 - 1/8" ID)
Thickness:	1/4" Wall
Height:	Cover: 54" (Overall Height 60") * Cover can be cut for shorter height
Product Weight:	6.4 lbs
Material:	Thermoplastic HDPE
Top:	Domed



IMPACT recovery SYSTEMS

www.SlowStop.com



By **IMPACT recovery**
SYSTEMS™

6" Plastic Bollard Cover

Part No. SS6C-COVER



Standard covers are 55" tall creating a 66" tall bollard when installed on a SlowStop® 6" bollard kit. Covers can be cut for shorter heights.

Color Option:	Yellow, Red, Blue, Gray, White, Black, Green, Orange or Brown
Diameter:	7 -3/8" (6 - 7/8" ID)
Thickness:	1/4" Wall
Height:	Cover: 55" (Overall Height 66") * Cover can be cut for shorter height
Product Weight:	10 lbs
Material:	Thermoplastic HDPE
Top:	Domed

3" Replacement Pipe (39.5")

Part No. R-SS3Y-PIPE-39.5



This is a pre-cut section of SlowStop® 3" pipe to be used as a replacement bollard. Pipe comes with a durable yellow powder coat and a black cap.

Color:	RAL 1018 Yellow Bollard on Black Base
Diameter:	2.88" (2.5" ANSI Schedule 40)
Pre-Cut Length:	39.5"
Product Weight	18 lbs
Temperature Rating:	-40°
Pipe Coating:	150µm Polyester Outdoor Power Coat
Cap:	Black Plastic

4" Replacement Pipe (39")

Part No. R-SS4Y-PIPE-39



This is a pre-cut section of SlowStop® 4" pipe to be used as a replacement bollard. Pipe comes with a durable yellow powder coat and a black cap.

Color:	RAL 1018 Yellow Bollard on Black Base
Diameter:	4" (3.5" ANSI Schedule 40)
Pre-Cut Length:	39"
Product Weight	27 lbs
Temperature Rating:	-40°
Pipe Coating:	150µm Polyester Outdoor Power Coat
Cap:	Black Plastic

5" Replacement Pipe (37")

Part No. R-SS5Y-PIPE-37



This is a pre-cut section of SlowStop® 5" pipe to be used as a replacement bollard. Pipe comes with a durable yellow powder coat and a black cap.

Color:	RAL 1018 Yellow Bollard on Black Base
Diameter:	5.56" (5" ANSI Schedule 40)
Pre-Cut Length:	37"
Product Weight	44 lbs
Temperature Rating:	-40°
Pipe Coating:	150µm Polyester Outdoor Power Coat
Cap:	Black Plastic

6" Replacement Pipe (37")

Part No. SS6Y-PIPE-37

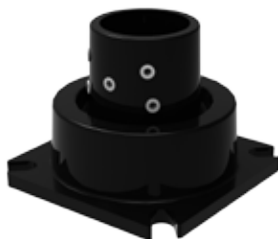


This is a pre-cut section of SlowStop® 6" pipe to be used as a replacement bollard. Pipe comes with a durable yellow powder coat and a black cap.

Color:	RAL 1018 Yellow Bollard on Black Base
Diameter:	6.63" (6" ANSI Schedule 40)
Pre-Cut Length:	37"
Product Weight	64 lbs
Temperature Rating:	-40°
Pipe Coating:	150µm Polyester Outdoor Power Coat
Cap:	Black Plastic

3" Base Kit

Part No. SS3-BASE



The 3" Base kit includes one SlowStop® rebounding base and anchors. You must supply your own pipe. Pipe required: ANSI schedule 40 nominal 2.5" pipe with outside diameter of 2.88".

Color:	Black
Diameter:	2.88" (2.5" ANSI Schedule 40)
Dimensions:	7.68"W x 7.68"L x 5.59"H
Product Weight	20 lbs
Temperature Rating:	-40°
Cast Iron Coating:	Environmentally Friendly Water-Based KTL Coating
Anchor Screws:	(4) 5/8" x 5-1/2" Concrete Anchor Screws

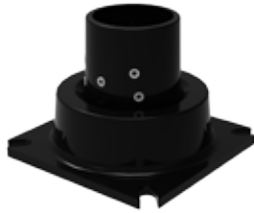




By **IMPACT recovery**
SYSTEMS™

4" Base Kit

Part No. SS4-BASE



The 4" Base kit includes one SlowStop® rebounding base and anchors. You must supply your own pipe. Pipe required: ANSI schedule 40 nominal 3.5" pipe with outside diameter of 4".

Color:	Black
Diameter:	4" (3.5" ANSI Schedule 40)
Dimensions:	10"W x 10"L x 7"H
Product Weight	33 lbs
Temperature Rating:	-40°
Cast Iron Coating:	Environmentally Friendly Water-Based KTL Coating
Anchor Screws:	(4) 5/8" x 5-1/2" Concrete Anchor Screws

5" Base Kit

Part No. SS5-BASE

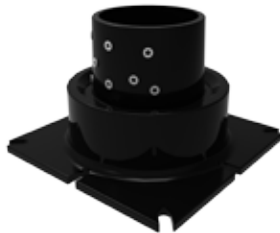


The 5" Base kit includes one SlowStop® rebounding base and anchors. You must supply your own pipe. Pipe required: ANSI schedule 40 nominal 5" pipe with outside diameter of 5.56".

Color:	Black
Diameter:	5.56" (5" ANSI Schedule 40)
Dimensions:	12"W x 14"L x 10"H
Product Weight	66 lbs
Temperature Rating:	-40°
Cast Iron Coating:	Environmentally Friendly Water-Based KTL Coating
Anchor Screws:	(6) 5/8" x 5-1/2" Concrete Anchor Screws

6" Base Kit

Part No. SS6-BASE



The 6" Base kit includes one SlowStop® rebounding base and anchors. You must supply your own pipe. Pipe required: ANSI schedule 40 nominal 6" pipe with outside diameter of 6.63".

Color:	Black
Diameter:	6.63" (6" ANSI Schedule 40)
Dimensions:	16"W x 16"L x 10"H
Product Weight	97 lbs
Temperature Rating:	-40°
Cast Iron Coating:	Environmentally Friendly Water-Based KTL Coating
Anchor Screws:	(8) 5/8" x 5-1/2" Concrete Anchor Screws

SLOWSTOP® LIMITED WARRANTY



DISCLAIMER OF WARRANTIES

EXCEPT FOR THE EXPRESS WARRANTIES CONTAINED HEREIN, TO THE MAXIMUM EXTENT PERMITTED BY APPLICABLE LAW, IRS MAKES NO REPRESENTATIONS OR WARRANTIES, EXPRESS, IMPLIED OR STATUTORY, REGARDING IN ANY MANNER ITS PRODUCTS OR PRODUCT CONDITIONS, INCLUDING, WITHOUT LIMITATION, THAT OF MERCHANTABILITY, SUITABILITY, ORIGINALITY, FITNESS FOR A PARTICULAR USE OR PURPOSE, OR A RESULT TO BE DERIVED FROM THE USE OF ITS PRODUCTS THEREOF, AND IRS EXPRESSLY DISCLAIMS ANY AND ALL WARRANTIES ARISING FROM COURSE OF DEALING, USAGE OF TRADE, COURSE OF PERFORMANCE, AND THE IMPLIED WARRANTIES OF MERCHANTABILITY AND FITNESS FOR PARTICULAR PURPOSE. BUYER ACKNOWLEDGES THAT IT IS A SOPHISTICATED USER OF SAFETY PRODUCTS, AND AGREES THAT THIS PROVISION IS AN INTEGRAL PART OF IMPACT RECOVERY SYSTEMS' PRICING AND AN IMPORTANT FACTOR IN ITS WILLINGNESS TO PROVIDE/SELL SUCH PRODUCTS TO BUYER.

LIMITATION OF LIABILITY

IRS AND ITS DISTRIBUTOR'S AGGREGATE CUMULATIVE LIABILITY AND OBLIGATION SHALL BE TO REPAIR OR REPLACE SUCH QUANTITY OF PRODUCT SOLD TO BUYER WHICH IS PROVEN TO BE DEFECTIVE OR NONCONFORMING, IN A MANNER SUITABLE TO IRS TO ASCERTAIN THE DEFECT OR NON-CONFORMITY COMPLAINED OF IF REPORTED TO IRS IN WRITING WITHIN THIRTY (30) DAYS OF THE DISCOVERY OF THE DEFECT OR NONCONFORMITY. IN NO EVENT WILL IRS OR ITS DISTRIBUTOR BE LIABLE IN TORT OR CONTRACT FOR CONSEQUENTIAL, INDIRECT, INCIDENTAL, PUNITIVE, OR ANY OTHER NONDIRECT DAMAGES, INCLUDING, WITHOUT LIMITATION LOSS PROFITS, OR DAMAGES ARISING OUT OF ANY CLAIM FOR PERSONAL INJURIES OR DEATH, ARISING OUT OF THE USE, MISUSE, OR INABILITY TO USE THE PRODUCT.

This product has been manufactured and tested to the highest quality standards. This Limited Warranty covers defects in material or workmanship of new SlowStop® Bollard products. This warranty extends to the original purchaser only and is non-transferable. Only users purchasing SlowStop Bollard products from Impact Recovery Systems, Inc., its authorized distributors or resellers, or through Impact Recovery Systems' authorized websites are eligible for coverage under this Limited Warranty.

What is Covered?

Impact Recovery Systems, Inc. warrants this product against:

1. Material or Workmanship Defects:

Impact Recovery Systems, Inc. will replace, at no charge, any product or part of the product or, at its option, replace parts only for any product that proves defective because of improper workmanship and/or material, under normal installation, use, service, and maintenance. If Impact Recovery Systems, Inc. is unable to provide a replacement and repair is not practical or cannot be made in a timely fashion, Impact Recovery Systems, Inc. may elect to refund the purchase price in exchange for the return of the product.

2. Base and Modular Connectors Breakage:

Impact Recovery Systems, Inc. will replace, at no charge, any part of the bollard base or modular connectors that break or become unusable as a result of an impact given that the speed and mass of the impacting vehicle are not beyond the specified limits of the product. If Impact Recovery Systems, Inc. is unable to provide a replacement and repair is not practical or cannot be made in a timely fashion, Impact Recovery Systems, Inc. may elect to refund the purchase price in exchange for the return of the product.

How Long Does The Coverage Last?

Two Year Warranty:

The warranty period is two years from the documented date of purchase.

What Our Warranty Does Not Cover

Our warranties do not cover any problems that are caused by:

- A. Conditions, malfunctions, or damage not resulting from defects in material or workmanship
- B. Conditions, malfunctions, or damage resulting from normal wear and tear, improper installation, improper maintenance, misuse, abuse, negligence, accident, or alteration.
- C. Conditions, malfunctions, or damage resulting from the addition, incorporation, and use and association with any accessory or product not manufactured by Impact Recovery Systems, Inc.

Pipe components are not warranted against dents or bending that are a result of impact beyond specified energy absorption limits of the product.

Limited warranties are void if a product is returned with removed, damaged, or tampered labels or any alterations (including removal of any component).

How to File a Claim

Impact Recovery Systems, Inc. will not provide any warranty coverage unless claims are made in compliance with all terms of the controlling warranty statement included with your product and you follow proper return procedure. To request warranty service, you will need to provide the following to receive a Return Merchandise **Authorization (RMA) number**:

1. The Purchase Order Number or other evidence of the date and place of purchase.
2. A description and photo documentation of the defect or non-conformity, in writing within thirty (30) days of the discovery.
3. If requested, delivery of the product or the defective part, postage prepaid, and carefully packed and insured, along with the RMA number, to:

Impact Recovery Systems
Attn: Customer Service
4955 Stout Drive
San Antonio, Texas 78219

When warranty service is completed, any repaired or replacement product or part will be returned to you postage prepaid. If replacement is being provided the customer will be responsible for shipping costs.

What State Law Applies?

This limited warranty has been accepted and made performable in Bexar County, Texas. The agreement for the sale of these products manufactured by Impact Recovery Systems, Inc., and the rights and obligations of the parties shall be construed under and governed by the laws of the State of Texas, without giving effect to principles of conflicts of laws. Exclusive venue for resolution of any dispute between the parties related to the sale of such products shall be in Bexar County, Texas.

Impact Recovery Systems, IRS, and SlowStop are registered trademarks of Impact Recovery Systems, Inc. The products mentioned in this document are covered by patent numbers. Other U.S. and international patents pending.



IMPACT recovery
SYSTEMS



PRODUCT INDEX

Alphabetical Index by name and by part number

Index by Product Name:

About SlowStop®	03
Base Kit	23-24
3" Base Kit	23
4" Base Kit	24
5" Base Kit	24
6" Base Kit	24
Benefits of SlowStop®	04
Contact Impact Recovery Systems	i
Company History	ii
Custom Modular Fencing Solutions	14
Handicap Parking Bollard	10
Connectors	15-16
3" Cross Connector	15
4" Cross Connector	16
3" Elbow Connector	15
4" Elbow Connector	16
3" Tee Connector	15
4" Tee Connector	16
Horeshoe Bollard	13-14
3" Horeshoe Bollard Kit	13
4" Horeshoe Bollard Kit (28")	14
4" Horeshoe Bollard Kit (42")	14
Pipe - Per - Foot	14
Polycarbonate Guardrail	18
Polycarbonate Guardrail End-Piece	18
Plastic Bollard Cover	21-21
4" Plastic Bollard Cover	21
6" Plastic Bollard Cover	22
Rebounding Bollard Kits	07-08
3" Rebounding Bollard Kit	07
4" Rebounding Bollard Kit	08
5" Rebounding Bollard Kit	08
6" Rebounding Bollard Kit	08
Replacement Pipe	22-23
3" Replacement Pipe	22
4" Replacement Pipe	22
5" Replacement Pipe	23
6" Replacement Pipe	23

Index by Part Number

R-SS3Y-PIPE-39.5	22
R-SS4Y-PIPE-39	22
R-SS5Y-PIPE-37	23
R-SS6Y-PIPE-37	23
SS3-BASE	23
SS3-CROSS	15
SS3-ELBOW	15
SS3-TEE	15
SS3Y-36-HS-36	13
SS3Y-42	07
SS3Y-PIPE-XX	14
SS4-BASE	24
SS4-CROSS	16
SS4-ELBOW	16
SS4-TEE	16
SS4C-COVER	21
SS4Y-28-HS-36	14
SS4Y-42	08
SS4Y-42-HC	10
SS4Y-42-HS-36	14
SS4Y-PIPE-XX	14
SS5-BASE	24
SS5Y-42	08
SS5Y-PIPE-XX	14
SS6-BASE	24
SS6C-COVER	22
SS6Y-42	08
SS6Y-PIPE-XX	14
SSEY	18
SSRY-4	18

REBOUNDED BOLLARD SYSTEM

15 EASY Minute 
INSTALLATION

*Our rebounding bollards install in minutes
with no special tools needed.*

- **Instantly Operational**
- **No Core Drilling**
- **No Special Tools**
- **No Backfilling**
- **2 Year Warranty**

Our rebounding bollards **absorb energy** from a collision, **reducing damage** to vehicles and assets while protecting personnel.

**SLOW STOP
BOLLARD**



By **IMPACT recovery**
SYSTEMS



(800) 736-5256